



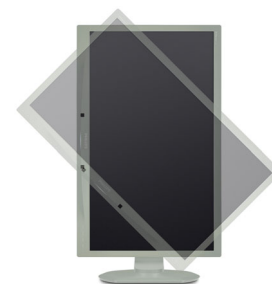
Philips Brilliance  
LED-backlit LCD monitor  
with PowerSensor

### B Line

27" (68.6 cm)  
Quad HD (2560 x 1440)

**Brilliance**

272B4QPJCG



## Crisp images, efficient performance

with PowerSensor saves energy

This Philips PowerSensor LED display with PVC and BFR free housing, USB hub and ergonomic base is ready for eco-friendly productivity

### Sustainable Eco-design

- PowerSensor saves up to 80% energy costs
- 65% post consumer recycled plastics with TCO Edge

### Brilliant performance

- IPS-AHVA wide-view technology for image and color accuracy
- Crystalclear images with Quad HD 2560x1440 pixels
- MultiView enables active dual connect and view at same time
- Less eye fatigue with Flicker-free technology

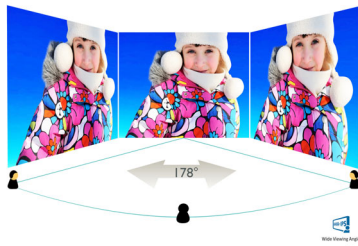
### Designed for people

- SmartErgoBase enables people-friendly ergonomic adjustments
- Low bezel-to-table height for maximum reading comfort
- Built-in stereo speakers for multimedia
- USB 3.0 Hub for convenient access and fast charging
- SmartConnect with HDMI, Display port and Dual link DVI
- MHL technology for enjoying mobile content on big screen

**PHILIPS**

# Highlights

## IPS-AHVA display



IPS-AHVA displays use an advanced technology which gives you extra wide viewing angles of 178/178 degree, making it possible to view the display from almost any angle. Unlike standard TN panels, IPS-AHVA displays give you remarkably crisp images with vivid colors, making it ideal not only for Photos, movies and web browsing, but also for professional applications which demand color accuracy and consistent brightness at all times.

## Crystalclear images

These latest Philips screens deliver Crystalclear, Quad HD 2560x1440 or 2560x1080 pixel images. Utilizing high performance panels with high density pixel count, enabled by high bandwidth sources like Displayport, HDMI, Dual link DVI, these new displays will make your images and graphics come alive. Whether you are demanding professional requiring extremely detailed information for CAD-CAM solutions, using 3D graphic applications or a financial wizard working on huge spreadsheets, Philips displays will give you Crystalclear images.

## MultiView technology

With the ultra high resolution Philips MultiView display you can now experience a world of connectivity in a comfortable way whether at office or at home. MultiView enables active dual connect and view so that you can work with multiple devices like PC and Notebook side-by-side simultaneously, making complex multi-tasking work a breeze. Watching live football feed from your set-top box on right side, while browsing the Internet from your notebook on the left is now easy. You may want to keep an eye on the live news

feed with audio in the small window, while working on your latest blog.

## Flicker-free technology



Due to the way brightness is controlled on LED-backlit screens, some users experience flicker on their screen which causes eye fatigue. Philips Flicker-free Technology applies a new solution to regulate brightness and reduce flicker for more comfortable viewing.

## SmartErgoBase



The SmartErgoBase is a monitor base that delivers ergonomic display comfort and provides cable management. The base's people-friendly height, swivel, tilt and rotation angle adjustments position the monitor for maximum comfort that can ease the physical strains of a long workday; cable management reduces cable clutter and keeps the workspace neat and professional.

## Built-in stereo speakers

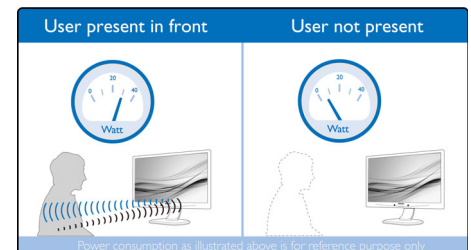
A pair of high quality stereo speakers built into a display device. It can be visible front firing, or invisible down firing, top firing, rear firing, etc depending on model and design.

## SmartConnect

With a plethora of connectivity, these Philips displays come equipped with multi connections

like Dual link DVI, Display Port, universal HDMI connector, enabling you to enjoy high resolution uncompressed video and audio content. USB 3.0 option ensures that you can have super speed data transfers while having global connectivity. Regardless of what source you use, you can rest assured that this Philips display will ensure your investment is not made obsolete any time soon!

## PowerSensor



PowerSensor is a built-in 'people sensor' that transmits and receives harmless infrared signals to determine if user is present and automatically reduces monitor brightness when user steps away from the desk, cutting energy costs by up to 80 percent and prolonging monitor life

## MHL technology



Mobile High Definition Link (MHL) is a mobile audio/video interface for directly connecting mobile phones and other portable devices to high-definition displays. An optional MHL cable allows you to simply connect your MHL capable mobile device to this large Philips MHL display, and watch your HD videos come to life with full digital sound. Now not only you can enjoy your mobile games, photos, movies, or other apps on its big screen, you can simultaneously charge your mobile device so you never run out of power half way.



# Specifications

## Picture/Display

- LCD panel type: IPS-AHVA LCD
- Backlight type: W-LED system
- Panel Size: 27 inch / 68.6 cm
- Effective viewing area: 596.7 (H) x 335.7 (V)
- Aspect ratio: 16:9
- Optimum resolution: 2560 x 1440 @ 60Hz
- Response time (typical): 12 (Gray to Gray) ms
- SmartResponse (typical): 4 ms (Gray to Gray)
- Brightness: 350 cd/m<sup>2</sup>
- Contrast ratio (typical): 1000:1
- SmartContrast: 20,000,000:1
- Pixel pitch: 0.233 x 0.233 mm
- Viewing angle: 178° (H) / 178° (V), @ C/R > 10
- Picture enhancement: SmartImage
- Display colors: Color support: True 8 bit
- Scanning Frequency: 30 - 83 kHz (H) / 56 - 76 Hz (V)
- sRGB

## Connectivity

- USB: USB 3.0x4 (1 w/fast charging)\*
- Signal Input: DVI-D (digital, HDCP), VGA (Analog), DisplayPort, MHL-HDMI (digital, HDCP)
- Sync Input: Separate Sync, Sync on Green
- Audio (In/Out): PC audio-in, Headphone out

## Convenience

- Built-in Speakers: 2 W x 2
- User convenience: SmartImage, Multiview, User, Menu, Power On/Off
- Control software: PowerSensor
- OSD Languages: Brazil Portuguese, Czech, Dutch, English, Finnish, French, German, Greek, Hungarian, Italian, Japanese, Korean, Polish, Portuguese, Russian, Simplified Chinese, Spanish, Swedish, Traditional Chinese, Turkish, Ukrainian
- Other convenience: Kensington lock, VESA mount (100x100mm)
- Plug & Play Compatibility: DDC/CI, Mac OS X, sRGB, Windows 8.1 / 8 / 7

## Stand

- Height adjustment: 120 mm
- Pivot: 90 degree
- Swivel: -65/65 degree
- Tilt: -5/20 degree

## Power

- ECO mode: 25 W (typ.)
- On mode: 31.77 W (typ.) (EnergyStar 6.0 test method)
- Standby mode: <0.5 W (typ.)
- Off mode: <0.3 W (typ.)
- Power LED indicator: Operation - White, Standby mode- White (blinking)
- Power supply: 100-240VAC, 50-60Hz, External

## Dimensions

- Product with stand (mm): 639 x 540 x 244 mm
- Product without stand (mm): 639 x 405 x 68 mm
- Packaging in mm (WxHxD): 740 x 490 x 299 mm

## Weight

- Product with stand (kg): 6.72 kg
- Product without stand (kg): 4.40 kg
- Product with packaging (kg): 10.60 kg

## Operating conditions

- Temperature range (operation): 0°C to 40°C °C
- Temperature range (storage): -20°C to 60°C °C
- Relative humidity: 20%-80 %
- Altitude: Operation: +12,000ft (3,658m), Non-operation: +40,000ft (12,192m)
- MTBF (demonstrated): 70,000 hrs (excluded backlight)

## Sustainability

- Environmental and energy: PowerSensor, EnergyStar 6.0, EPEAT Gold\*, RoHS
- Recyclable packaging material: 100 %
- Post consumer recycled plastic: 65%
- Specific Substances: PVC / BFR free housing, Mercury free, Lead free

## Compliance and standards

- Regulatory Approvals: CE Mark, FCC Class B, CU-EAC, cETLus, SEMKO, TUV Ergo, TUV/GS, WEEE, TCO certified

## Cabinet

- Front bezel: Grey
- Rear cover: Grey
- Foot: Grey
- Finish: Texture



Issue date 2015-07-19

Version: 2.0.1

12 NC: 8670 001 29896  
EAN: 87 12581 73564 7

© 2015 Koninklijke Philips N.V.  
All Rights reserved.

Specifications are subject to change without notice.  
Trademarks are the property of Koninklijke Philips N.V.  
or their respective owners.

[www.philips.com](http://www.philips.com)

\* This Philips display is MHL certified. However, in case your MHL device does not connect or work correctly, check with your MHL device FAQ or vendor directly for direction. The policy of your device manufacturer may require you to purchase their brand specific MHL cable or adapter in order to work

\* Standby/Off energy saving of ErP is not applicable for the MHL charging functionality

\* Requires optional MHL certified mobile device and MHL cable. (not included) Please check with your MHL device vendor for compatibility.

\* For complete list of MHL-enabled products refer to [www.mhlconsortium.org](http://www.mhlconsortium.org)

\* EPEAT Gold is valid only where Philips registers the product. Please visit [www.epeat.net](http://www.epeat.net) for registration status in your country.

\* Smart response time is the optimum value from either GtG or GtG (BW) tests.

\* Fast charging through BC 1.2 standard